

# House and land package



## Pakage inclusion

- ◆ Full turn key package with premium inclusions and Quality build
- ◆ **MGP10 frame construction with 450mm centres**
- ◆ Double Garage
- ◆ Coloured Concrete Driveway
- ◆ Tilled Shower Bases to all Bathrooms
- ◆ 2,700 Ceiling Height
- ◆ 900 mm Kitchen Appliances
- ◆ Ducted Heating
- ◆ Fixed Site Cost upto 300 mm fall
- ◆ Recycle Water as per Developer Guidelines
- ◆ Soft close Cabinets
- ◆ Concrete Roof Tiles from Builder's Range
- ◆ 2000mm High Semi-Frameless Shower Screens
- ◆ 6 Star Energy Rating on best Orientation
- ◆ Carpet and Floor Tiles throughout
- ◆ Choice of contemporary tapware Basins and Mixers
- ◆ Designer Front Entry Door from Builders Range
- ◆ Niches in Bathroom
- ◆ 2 Remote Controls to Garage Door
- ◆ Privacy Locks to Bedroom and Barhroom
- ◆ Wide range of Glossy Cabinets
- ◆ 40 mm Engineered stone in Kitchen
- ◆ Melamine Shelving with hanging rods in wardrobes
- ◆ Miirrored sliding doors in bedrooms
- ◆ 03 coat paints on all the wall from Builders Range
- ◆ Option to upgrade \$15000 from Ansel Premium Package just by paying \$2500

Lot No : 2521 Trevee Parkway Werribee  
 Lot size : 14 x 32 (448 Sqmt)  
 House size : 27 SQR (Approx.)



4 Bed



2 Garage



2 Bath

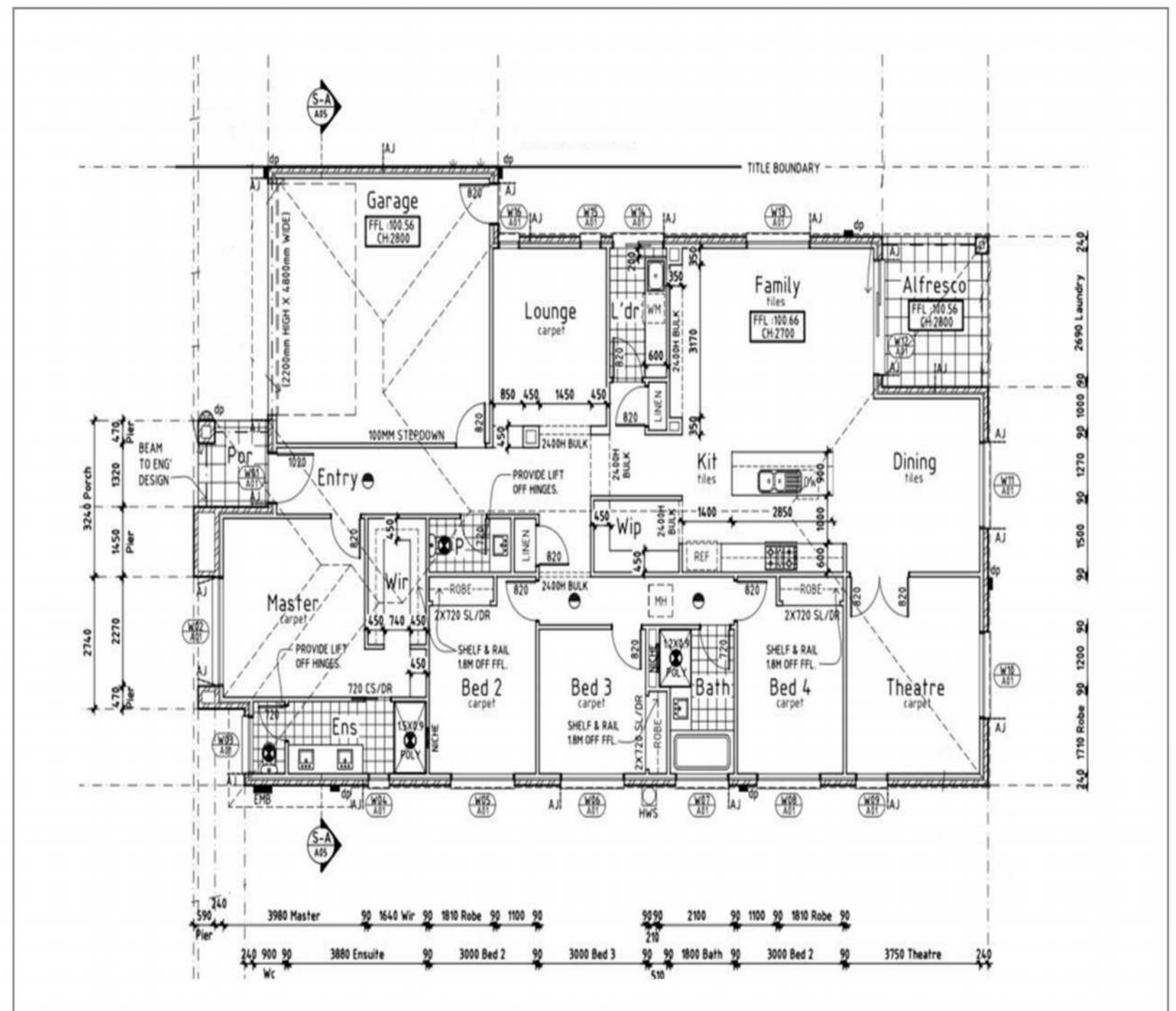


Image is for illustrative purpose only and may not represent, but not limited to, the final product, facade, driveway, landscaping and all inclusions. Price is based on availability of land. The builder reserves the right to amend the specifications and price without written notification. Developer guidelines may affect the final price, inclusion and facade design. Home and package cost subject to soil test report, engineering report, developer approval. BAL and 6 star report AND is not available in conjunction with other promotions. The prices and information in this document is corrected at 15/08/2019 to 30/11/2019 (subject to chance without notice) FHOG applies to eligible buyers only visit [www.sro.vic.au](http://www.sro.vic.au) for more information. This plan is copy right - protected - it is advertised on the condition that expect with our written permission it must not be reproduced, copied, altered, or communicated to any other party not be used for any purpose other than stated in the particular inquiry, order or contract with which it was issued.



- CUSTOM HOME
- MULTI UNIT DEVELOPMENTS
- HOUSE & LAND PACKAGE
- PROTECT MANAGERMENTS



Making your vision come true, that is what we do

0410981144

[www.ansel.com.au](http://www.ansel.com.au)

[sandy@ansel.com.au](mailto:sandy@ansel.com.au)